



# Sterling HOMES

A QUALICO Company

## ELEVATIONS



PRAIRIE



FARMHOUSE



CRAFTSMAN



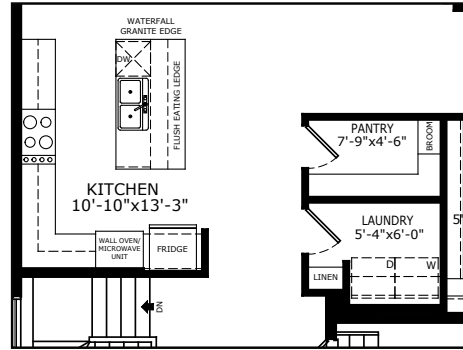
SCANDINAVIAN



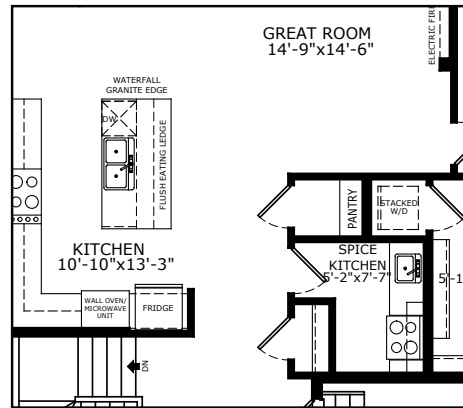
Scan here  
for floorplan  
options and  
more

## MAIN FLOOR OPTIONS

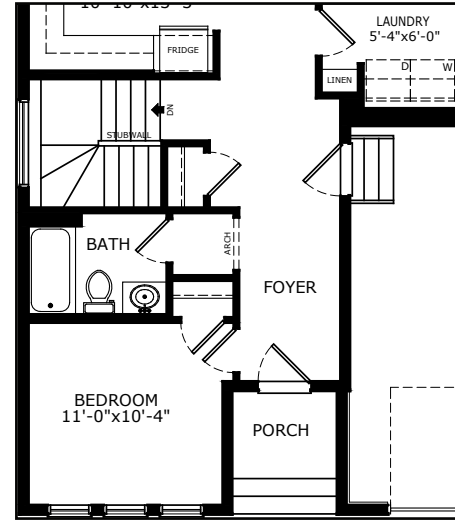
OPTIONAL EXECUTIVE KITCHEN



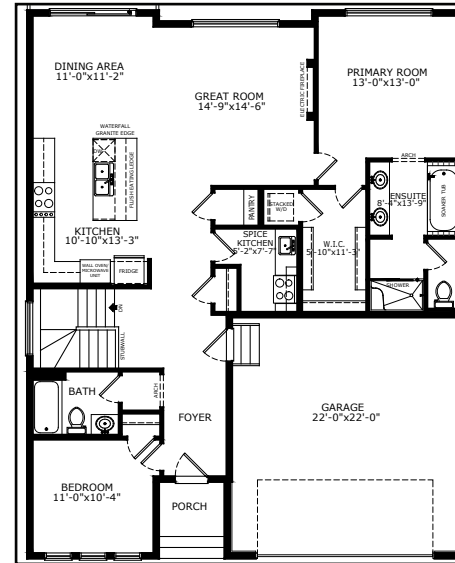
OPTIONAL SPICE KITCHEN



OPTIONAL FULL BATH WITH BEDROOM

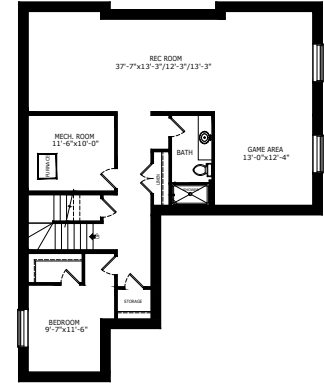


OPTIONAL MAIN FLOOR WITH BEDROOM  
AND FULL BATH

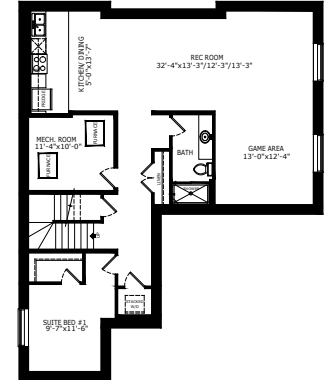


## BASEMENT OPTIONS

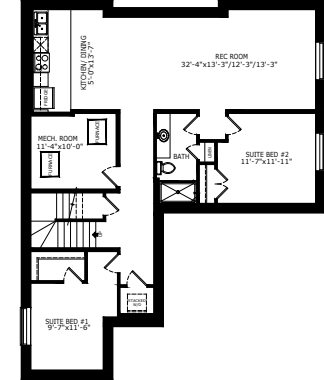
STANDARD 1156 SQ FT



1 BEDROOM 'LEGAL SUITE' 1160 SQ FT



2 BEDROOM 'LEGAL SUITE' 1160 SQ FT



\*Legal Suite availability varies by community and municipal regulations.

# Build Your Life

STERLINGCALGARY.COM